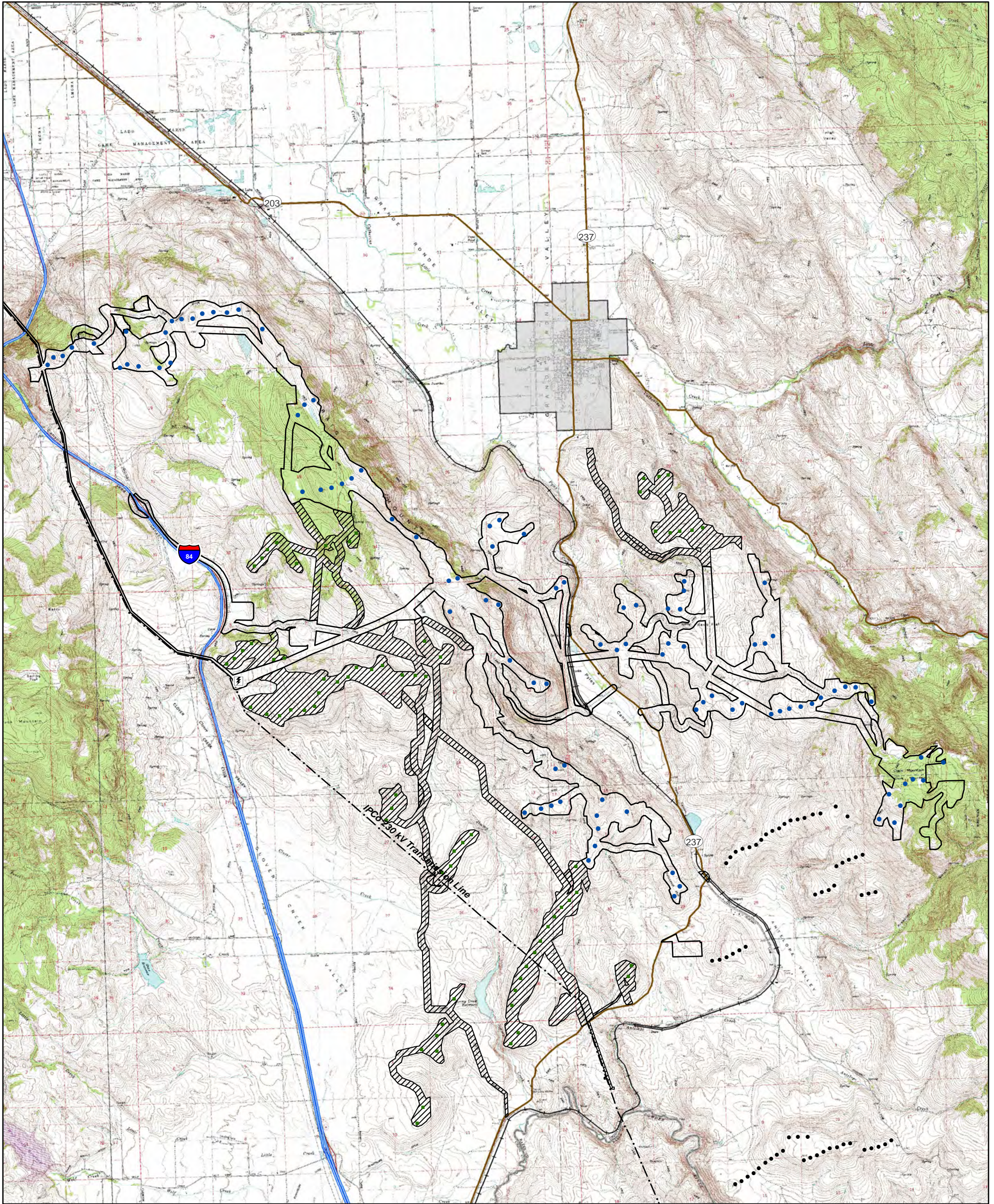




Antelope Ridge Wind Farm

General Areas of Development Phasing



Legend

- Elkhorn Valley Turbine Layout (As-Built)
- ▩ Preliminary Antelope Ridge Project Substation
- Existing High-Voltage Transmission Lines
- ▭ Phased Site Boundary
 - ▭ Antelope Ridge Wind Farm Site Boundary Phase I
 - ▨ Antelope Ridge Wind Farm Site Boundary Phase II
- Indicative Phased Layouts***
 - Indicative Phase I Layout (max 100 turbines)
 - Indicative Phase II Layout

* Turbine locations are preliminary, reflect a maximum build-out, and are subject to change based on EFSC final order conditions, or based on future discussions with the USFWS

November 2011



Projected Coordinate System
NAD83 HARN StatePlane Oregon North FIPS 3601 Feet Intl

Project Manager: Suzi Asmus
Project Developer/GIS Contact: Nick Benjamin
Project Location: Union County, Oregon

